

PHILIP GULLEY  
PASSES ON  
PROGRESS

THE HOOSIERIST  
GETS TO KNOW  
HIS SISTER (CITIES)

RUPERT  
SURVIVES A RUN  
FOR GOVERNOR

MAMA  
IRMA'S  
SPICES UP  
FOUNTAIN  
SQUARE

# Indianapolis

MONTHLY

**Androids**  
**Light Rail**  
**Roundabouts**  
**Wind Farms**  
**Design Trends**  
**& Other**  
**Visions of...**

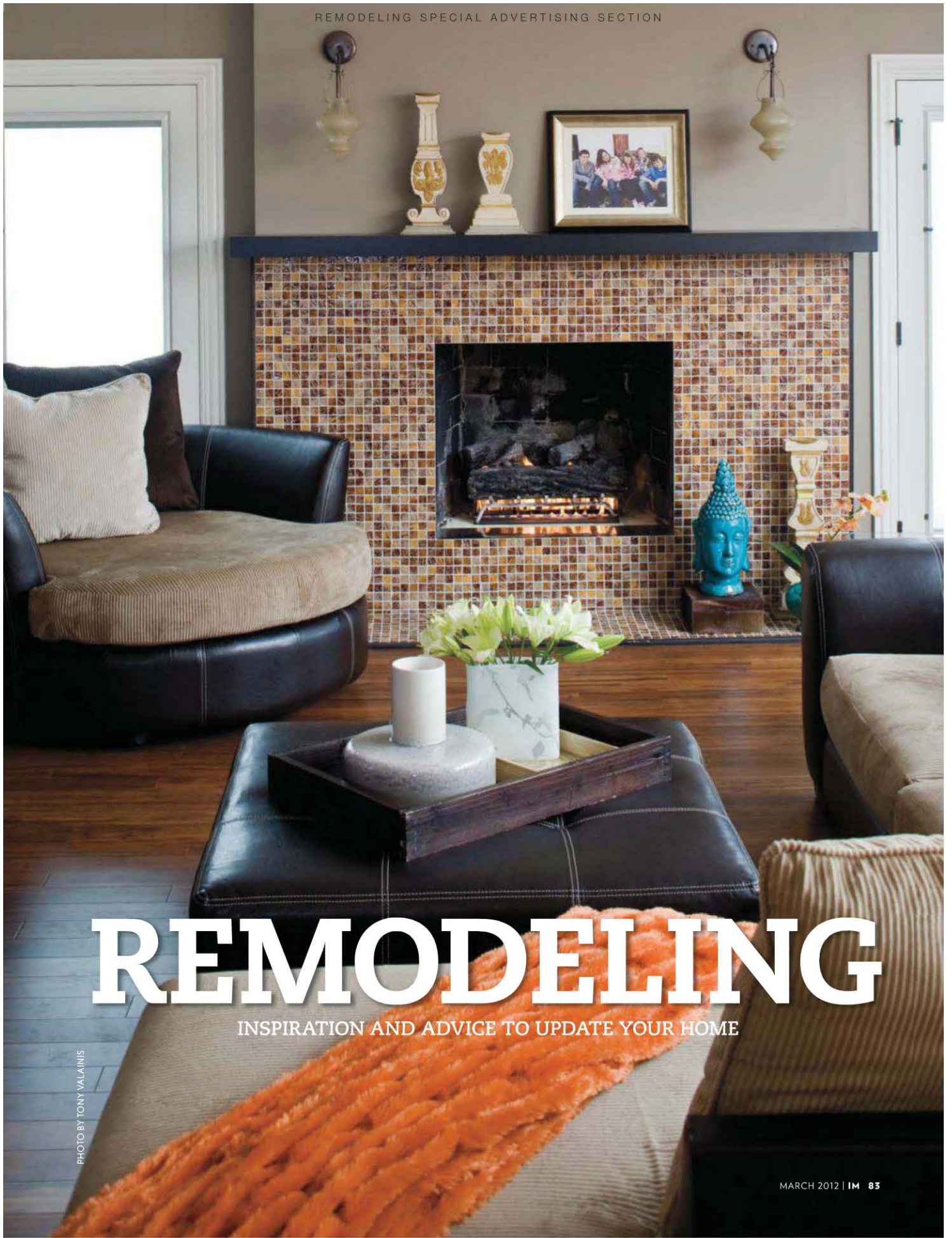
THE  
FUTURE

MARCH 2012 // \$4.95



LOCAL  
INVENTOR  
SCOTT JONES  
PREDICTS  
THE NEXT  
50 YEARS





# REMODELING

INSPIRATION AND ADVICE TO UPDATE YOUR HOME

PHOTO BY TONY VALAINIS



BY LORI D. ROBERTS

# Wide Open Spaces

*How a desire for a new floor plan—and creative thinking—improved one family’s home.*

**H**OW DOES A SMALL HOUSE BECOME A BIG SPACE? How does room for three become a home for six? How can designers combine “sleek and contemporary” with “warm and inviting” without clashing?

Interior designer Nancy Stanley and the staff of Kitchens by Design tackled these challenges when they were called to overhaul a home for Roger Mears and Sandra Edgell. The couple and their 2-year-old daughter share the home with a playful German shepherd and two cats. It is also home to Mears’ three older children, who also live there part of the time.

“They bought the home because they liked its overall size and location, so maintaining the integrity of that while solving the interior space issues was definitely my biggest challenge,” Stanley says.



BEFORE



## AFTER

To make the great room feel less dated, designers updated the fireplace area with colorful tiles. Bamboo flooring was installed to add warmth.



The couple's slightly different tastes needed to be accommodated as well.

"Roger likes things to be extremely modern," Edgell says. "I like things that are warm."

When the couple found the home, it featured a dated closed floor plan, with a compact kitchen and dining room, and a closed-off great room. Walls were going to have to come down to bring the spaces together and create a large living area for everyone, Stanley recalls.

"It was a home that was in need of updating," Stanley says. "The owner had done some cosmetic work, but the layout was intact. The open floor plan was desired, especially in family living."

The homeowners already knew general contractor Jeff Bennington with J&C Custom Homes, and asked him to do the heavy construction work to create a kitchen and great room that flowed into each other. Mears and Edgell aren't big on sit-down dinners, so they willingly sacrificed the dining room space in favor of a larger kitchen. The scenario was similar in the master suite, where a bathroom and closet were combined to become a luxurious master closet, and an addition behind the master bedroom created a spa-like master bath, complete with a walk-in shower and air-jet tub.

The main floor plan features a master bedroom and two smaller rooms, which covers the toddler and the teen-age boy. But the older daughters still needed a place to call their own, and designers found it in the sunroom off the back of the home. With a little bit of ingenuity, new shaded windows, and built-in bunk beds, the sunroom has become a playroom and bedroom for the girls that can also serve as a den for the older kids.

Along the way, Stanley added little touches to appeal to the homeowners' personal tastes. The homeowner is a big fan of ceiling architecture, so the home's tray ceilings in three bedrooms are dramatically trimmed and uniquely shaped to fit the occupants. Texture also plays an important role throughout the home, from the brushed stainless, leather wrapped pulls on the master bathroom hardware to the small tiles on the redesigned fireplace.

The designer also collaborated with the homeowners on the bamboo flooring.

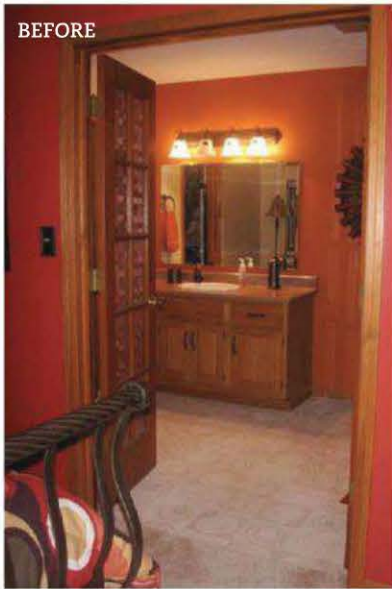


## AFTER

Homeowners opened up the kitchen to flow into the great room. Appliances, including the GE cooktop, were purchased from Clark Appliance.

BEFORE PHOTOS PROVIDED BY KITCHENS BY DESIGN. AFTER PHOTOS BY TONY VALANIS.





BEFORE



AFTER



## AFTER

The home's bathroom and closet were combined into a master closet (left). An addition behind the master suite created a spa-like master bath.

The homeowner knew she wanted wood, and Stanley researched the different types to find one that would be durable yet sophisticated. A chestnut-stained bamboo creates warmth and depth to the home while holding up under the wear and tear that comes with having pets and kids in the house.

"It instantly added the warmth we were looking for," Stanley says.

The kitchen emphasizes the theme of warmth, with its maple cabinetry from Custom Cupboards and granite countertops by Santarossa Mosaic & Tile Co. The couple eschewed a traditional kitchen table in favor of a rounded island that offers room for six. The island granite's amber and brown hues reflect the kitchen colors and add a quiet sophistication.

The couple's previous home featured stainless steel appliances, and they soon realized that stainless steel and little fingers aren't always a good combination. Instead, maple cabinetry dominates the new space. A delicious caramel stain and chocolate glaze gives the perimeter cabinetry an elegant warmth, while the island cabinetry has a charcoal stain for a darker, deeper contrast. The perimeter and island granites juxtapose each other: the island is a darker, earthier tone while the perimeter is lighter and brighter.

Smaller details set this kitchen apart and create a unique character. For instance, the GE cooktop area includes an Elica polished-stainless oven hood that looks more like a light fixture than an industrial air filter. Stanley opted for a

glass tile backsplash from Natural Stone Specialist, set behind the cook top for a funky, retro touch.

"We liked the lightness and the iridescent quality of the glass," Stanley says.

The great room carries on this theme with a retiled fireplace and hearth area. The fireplace, which is one of the first things a visitor notices when stepping inside the home, had a nondescript brick front and raised brick hearth that Stanley and her crew removed. The fireplace is now covered in small, colorful square tiles that reflect the color combinations in the kitchen area. The mantelpiece is stained to match the island cabinetry, further tying the rooms together. Decorative sconces add light and highlight the mantle, which is simple and uncluttered.





**AFTER**  
 The sun room was transformed into a bedroom and gathering spot. Bunk beds were built into the wall, and shaded windows were added.

Who wouldn't feel pampered by the standalone tub or glass enclosed shower? Large porcelain floor tiles reduce grout lines, and a diagonal placement balances the room's rectangular shape. A peacock on a wall adds a splash of color and whimsy.

Finally, the design team reworked a space for the two older girls. While kids might not want to be relegated to a sunroom at night, designers paid close attention to details to make it a welcoming space. Instead of bulky dressers in the girls' room, Stanley added a built-in armoire piece to create storage. The design team also added built-in bunk beds along the wall, and covered the nearby walls in warm bead-board.

"I wanted to be sure that the children had their own space separate from the main living area," Stanley says. "The existing sunroom was a natural space for a playroom. With all the windows, you really do feel like you are outdoors."

Mears and Edgell now enjoy their days in an updated dwelling.

"I love everything but specifically, (I love) the bamboo floor because it has such great movement, color variation, and a super durable finish," Edgell says. "I love the island countertop, the fireplace, and the family photo wall, which we also designed. The master bath is pretty cool, too!"

To the right, a door leading outside allows for easy access to the family's patio area. A fixed glass window was added to the other side of the fireplace for balance.

The family room was recreated as a cozy gathering spot, with a comfortable leather and corduroy sectional sofa and built-in shelving for the television and related entertainment accoutrements. The dark stain, burnished bronze hardware, and open grillwork continue the texture and color combinations found in the kitchen area, and provide ample space for family photos. Indeed, family photos are important in this household, and Stanley designed a picture wall to display photos

of smiling children and parents.

The master bedroom also enjoyed a dramatic metamorphosis. While "before" photos show a modest bedroom suite, the previous incarnation featured a smaller bathroom and closet area. By combining these areas, Stanley was able to fashion a spacious walk-in closet, creating space for organization and eliminating the need for bulky furniture in the bedroom. The king-sized bed is topped with a unique light fixture designed in perforated metallic leather. Sliding pocket doors open up to the new bathroom suite, which incorporates the sleek contemporary lines that Mears favors.