

A SPECIAL ADVERTISING SUPPLEMENT TO INDIANAPOLIS MONTHLY

INDIANAPOLIS MONTHLY 2015

DREAM HOME



AN EXCLUSIVE LOOK INSIDE THE CITY'S PREMIER SHOW HOME

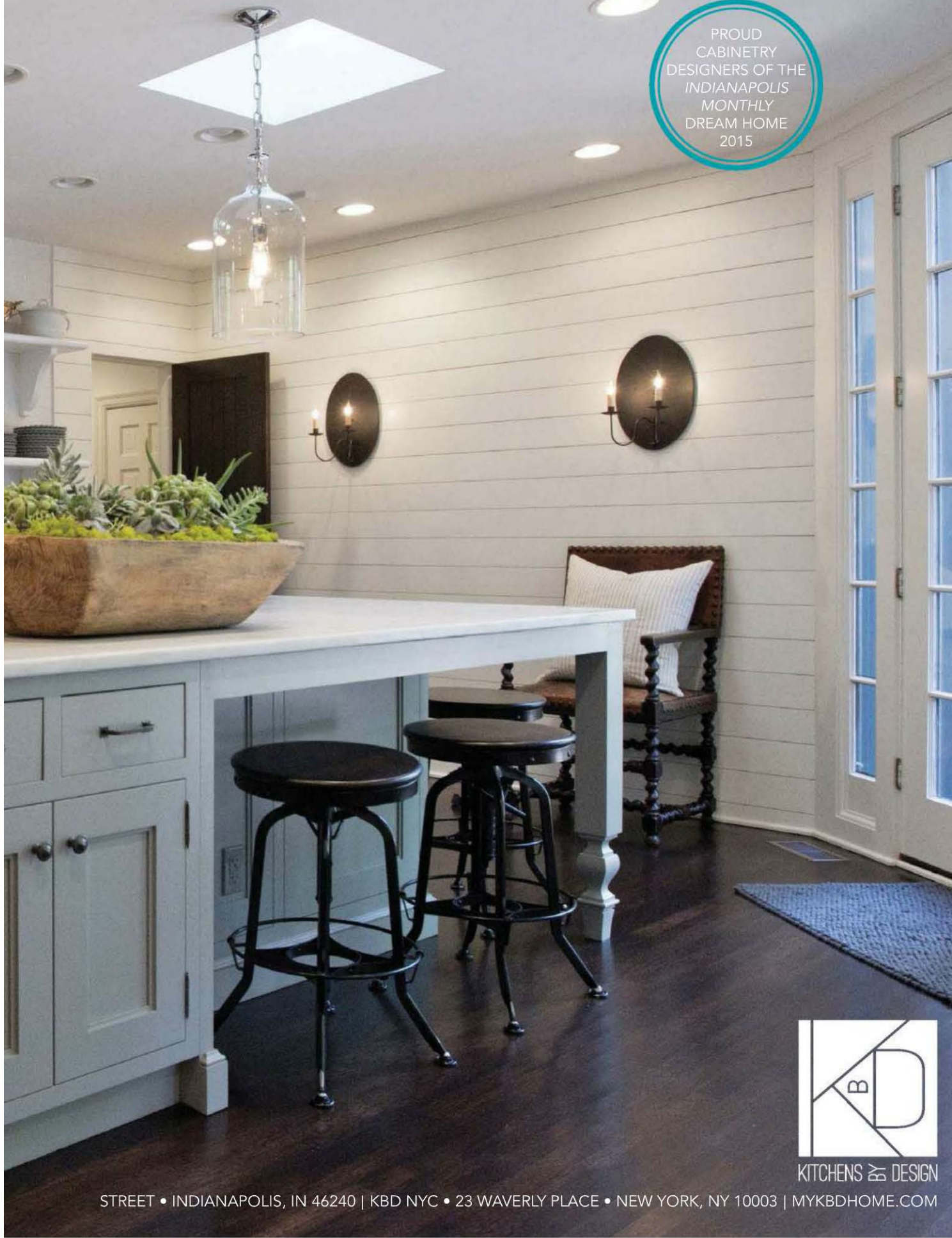


KBD HOME • 1540 E. 86TH STREET • INDIANAPOLIS, IN 46240 | MYKBDHOME.COM



KITCHENS BY DESIGN • 1530 E. 86TH STREET • INDIANAPOLIS, IN 46240 • 317-815-8880 | KBD HOME • 1540 E. 86TH

PROUD
CABINETS
DESIGNERS OF THE
INDIANAPOLIS
MONTHLY
DREAM HOME
2015



KITCHENS & DESIGN

STREET • INDIANAPOLIS, IN 46240 | KBD NYC • 23 WAVERLY PLACE • NEW YORK, NY 10003 | MYKBDHOME.COM

DREAM BIG

From the inside out and on all levels, the spectacular
Dream Home was a true team effort.

BY TRACY MARTIN

PHOTOGRAPHY BY TONY VALANIS



Great room, great view:
The Dream Home's
main living area has
plenty of seating to take
advantage of expansive
vistas across Geist.

T

THIS YEAR'S DREAM HOME STARTED WITH A strong vision that was shaped and molded by some of Indianapolis' experts into one dream come true.

The homeowners knew they wanted to build on or very near the water. When they first began envisioning the details, they were inspired by boutique hotels they had stayed in while traveling across the country and around the world. The peninsula on Geist Reservoir where their home sits offered both amazing opportunities and interesting challenges for the core group that was charged with bringing the homeowners' visions to fruition.

That team is composed of designer Gary Nance, owner of Gary Nance Design; builder Scott Campbell, owner of Scott Campbell Custom Homes; interior designer Linda Mordoh, owner of Savvy Decor; Kristin Okeley, owner of Kitchens by Design; Chad Bruick, owner of Outdoor Environments Group; and Rob Bussell of Marina Limited Partnership.

Retaining privacy

Nance wanted to do something significant with the home's layout and design. He proposed stretching it lengthwise to fit the lots and take advantage of magnificent water vistas on three sides.

"We threw out the traditional focus on curb appeal and turned the house to face the water rather than the street," Nance says.

But situating the home on a piece of land that's exposed to anyone passing by on a boat became a Rubik's Cube kind of challenge. The team had to be creative in bringing the views inside while also preventing exposure to lake traffic. The main floor was set about 16 feet above

water level, so the visibility of the lake is maintained, but boaters cannot see into the home.

"It was pretty tricky, but we found ways to position the house and the pool area above the lake, yet out of sight of the street," says Campbell. "These elevation techniques create privacy while still maintaining 100 percent of the view for the family to enjoy."

Taking advantage of the views

Throughout the design phase, much

attention was given to maximizing the lake setting from the inside. The sheer number of well-situated windows in every room makes that possible.

"The uniqueness of the site allowed us to create a lot of architectural interest with glass, which makes a big statement inside and out," Campbell says.

The home, which has seven bedrooms and seven full bathrooms over three levels, also had to accommodate a family of seven, plus houseguests and extended family visits. The owners anticipate large holiday gatherings, as



Clockwise from top: Builder Scott Campbell; interior designer Linda Mordoh with Rosemary Peters, Valerie Riley, and Kailyn Baker from Savvy Decor; the 2015 Dream Home Dream Team of (left to right) Campbell, Mordoh, Kristin Okeley of Kitchens by Design, Gary Nance with Gary Nance Design, Chad Bruick of Outdoor Environments Group, and Rob Bussell with Marina Limited Partnership.

well as hosting summertime vacationers, so they wanted a space that allowed them to play host as often as possible.

The owners envisioned an open design on the main floor that lent opportunities to be together. Nance designed several rooms on the main and upper levels to branch off of a central spine, which makes the areas feel separate yet joined and also offers water views on either side.

"The transition of rooms had to flow seamlessly from one to another and remain visually connected as much as possible to enhance everyday living, as well as entertaining," Nance says.

Campbell adds that the layout is spacious but not overwhelming.

"A lot of warmth and comfort have been built into the design," he says.

Family time

Mordoh also collaborated with the owners to solidify their vision of a comfortable and elegant space.

"This home isn't just a showpiece; a large family is going to be living, working, and playing in it," Mordoh says. "We wanted it to feel like the kind of place where people can simply come over and hang out."

The house was designed for every room to be functional and attractive. For example, on the main floor, the gear room, the laundry room, and the sous pantry are all easily accessible from the garage and secondary entrance. The kitchen creates a central hub for gathering. Its layout and design make it perfect for entertaining family and friends and fulfilling the homeowner's cooking hobby.

"The kitchen had to be a big space where multiple people could work at one time," says Elaine Pitcock, a designer with Kitchens by Design.

So work zones were created: a 36-inch cook top, a teppanyaki grill, a center island for prep and baking, and an outer island with seating on both sides.

"All of the cabinetry in the kitchen and dining room is painted, stained, and glazed," Pitcock says. "The look is very transitional, pretty, and calming."

Up & down

Upstairs, the master suite anchors one

end of a long gallery hallway flanked with artwork and bookcases. With an entire wall of windows, the master bedroom also places an emphasis on views.

For their children, the homeowners wanted comfortable bedrooms without TVs, preferring that they instead gather in the great room or the upper-level media room. But the bedrooms do still reflect the individuality of each child.

“Each one is geared to the personality of the child who will be using it, so they are all very different in color and expression,” Mordoh says.

On the other end of the hallway, a guest suite and bunkroom, accessible via an elevator, await the homeowners’ friends and family.

The idea of bringing the family together also extends to the home’s lower level. A uniquely shaped bar anchors the space, which also includes a spa area, a state-of-the-art media room, a home gym, and pool and shuffleboard tables.

From the ground up

For year-round comfort, the homeowners chose to install six Water Furnace geothermal heat pumps. Geothermal remains the most advanced and energy-efficient heating-and-cooling system — and it does require an additional financial investment, although a 30-percent federal tax credit helps soften the blow.

“Homeowners save between 20 and 50 percent on their heating and cooling bills,” says Dan Welklin, director of marketing at Precision Comfort Systems. And since the units are installed indoors, things like dirt, dust, grass clippings, and precipitation can’t affect their life expectancy, Welklin points out.

Job well done

“Working on this project has been a little like putting together the pieces of a puzzle,” Nance says. Each aspect came together with a central focus on the lake and an atmosphere of elegance and comfort.

“The homeowners have been involved in all phases of the work,” Campbell says. “Having that cohesive vision dictated by their desires made it much easier for so many different individuals to work together to create such a beautiful home.” ☺

WELCOME HOME

The Dream Home's main level unites convenience and style, thanks to functional spaces decked out in sophisticated neutrals with pops of color on the walls.

BY SHARI HELD

PHOTOGRAPHY BY TONY VALAINS

Dark walnut paneling lends a swanky, intimate feel to the clubroom.



Leading to the sunroom, a lantern-style fixture by Troy Lighting, supplied by Ferguson Bath, Kitchen & Lighting Gallery, illuminates two mixed-media pieces by Chuck Marksberry.



T

THE PLANNING PROCESS FOR THIS striking home began back in 2012 after the homeowners toured that year's Dream Home. They liked what they saw and commissioned designer Gary Nance to draw up the plans for their own dream residence, which has 16,000 square feet of finished space.

"It's a spectacular home, there's no question about it," says builder Scott Campbell. "We had to put a lot of thought into the layout. And with a house this size, there's a lot of detail work. To have everything come together and to have the homeowners be so happy with it—that's the most exciting thing for me."

Many rooms feature large, curved expanses of windows to bring those beautiful vistas inside—a priority for the homeowners. Nance designed the window grids so they gave the home dimension, both inside and out, but didn't obstruct the sights.

"We made the window panes on a larger scale from what would normally be done to accommodate the views," Nance says.

Interior designer Linda Mordoh says the home's inspiration is the earth.

"We tried to bring that feeling into the house by incorporating a lot of beautiful woods and natural stone," she says.

The home blends traditional with transitional for an elegant, timeless look that is also family-friendly and comfortable. The main level is cohesive, with each area flowing organically into the next.

"What makes the design so fantastic is how the spaces work in tandem," says

Kristin Okeley, owner of Kitchens by Design.

The main-level color palette is monochromatic—white, creams, warm grays, and silver.

"When you build a house like this, the view is the star, and the colors are going to be ever-changing outside the house," Mordoh adds.

Artwork supplies pops of color throughout the home. The owners worked with Evan Lurie Gallery to outfit much of the residence.

"This home is the perfect showplace for art," says Evan Lurie, gallery owner and director. "It was important to [the homeowners] that they helped promote

a classic lantern, but their size is unusual.

"For the scale of the house, even a normal-sized light fixture would have looked odd," Nance says. "So I designed them to fit the structure. They're one of a kind."

When you first step into the spacious foyer, the incredible floor draws your eye down the lengthy hall to the half-round sunroom, with a curved bank of windows and twin semi-circle white sofas at the opposite side of the home.

The floor, provided by Architectural Brick & Tile, is 18-inch by 36-inch Tunisian Britannia honed limestone slabs, containing light fissures and fossils, and was custom quarried for the home. The same limestone is used for the dining room, which is open to the foyer. The foyer walls are paneled in gray-painted wood but nothing is over-the-top elaborate.

"There's a lot of interior trim-work in the house, but the crown molding was kept minimal to keep it looking more simple and sleek," Campbell says.

A Yamaha Disklavier living room-grand piano from Piano Solutions sits in the foyer. To the right is the majestic main staircase, made from walnut with an ironwork handrail system custom-designed for the home by MoFab Ornamental Iron in Anderson.

His, hers, and theirs

The homeowners' office, topped off with gray ceiling beams, is to the right of the foyer. The sleek his-and-hers desks, separated by a Burton James chaise, are mirror images of one another. They feature bookcase niches, built-in chases to conceal wires, and spaces for pullout printers. The three

bookcases are contemporary and linear and include spaces to display artwork.

Both the desks and shelving were custom-created by Fremont Interiors in Carmel. Fashioned from American walnut, they're finished with an espresso stain, made especially for the project.

"As we designed the bookcases and desks for the room, we took into consideration the views looking out the



A contemporary chandelier by Eurofase provides good reason to look up as you're ascending the walnut staircase.

local artists, as well as display cutting-edge art from international artists."

A powerful impact from the start

Before entering the home, take a look at the custom brushed-metal fixtures on either side of the front door. Nance designed them to blend with the home's color and stone. They're an interpretation of



The dining-room table is topped off by two wrought-iron chandeliers by Currey & Company. Victor Wang's "Arrowed Sunflower Hat" colors the wall between the dining room and kitchen.

windows, the lighting, how the window treatments would interact with bookcases, and how artwork would be placed within the room,” says Kent Gilchrist, president of Fremont Interiors.

Gray raw-silk wallpaper from Philip Jeffries adorns the walls, and two dark-gray leather chairs and an ottoman by Vanguard Furniture are strategically placed in front of the large window.

Properly paneled

The superb clubroom is completely paneled in stained walnut and has a spectacular coffered ceiling, in the center of which is a drum light made of iron and handmade paper that Nance designed. Creating the room was one of the more complex projects in the home, but the stunning effect is worth it.

The fireplace is fashioned from Schist stone, a metamorphic rock layered with mica from Brazil with a brushed finish. Santarossa Mosaic & Tile Co. supplied, fabricated, and installed the fireplace, using a vein cut for a linear look. That, and the sparkle from the mica, give the feature a more contemporary appearance.

Floor-to-ceiling niches on either side of the bar hold treated pine logs from Northern Michigan. The hardwood floor from Architectural Brick & Tile is a three-quarter-inch, dark-stained black walnut with a double-sanded, soft-scraped finish. The same flooring is also used in the kitchen, sous pantry, great room, and upstairs hallway.

The room is anchored by a transitional Oriental rug in subtle shades of gray, beige, and gold from Royal Gallery of Rugs. Custom-created using a special process that gives it an aged, antique look, the borderless rug is made from wool and silk-viscose.

The powder room, which is accessible from the clubroom and the main entry, is also completely veneered in walnut and has an oval window.

“It has a very men’s-club feel to it,” Okeley says. The custom vanity has an antique silver-leaf finish and a sueded-granite countertop.

Dining in style

Since the dining room is open to the

foyer, Kitchens by Design created a low buffet and a paneled wall to bridge the two spaces. The shared wall between the dining room and the kitchen consists of floor-to-ceiling cabinetry, with drawers on the bottom and glass cabinets on the top, also by Kitchens by Design.

The glass cabinets were designed to be accessible from both rooms for high function and convenience, but the decorative glass and custom mullions also contribute to the ambience.

“It creates a lightness to that wall,” Okeley says. “So if you’re sitting in the dining room, and you look through these glass cabinets, you’ll see these beautiful distorted images of the kitchen. It adds interest to the area.”

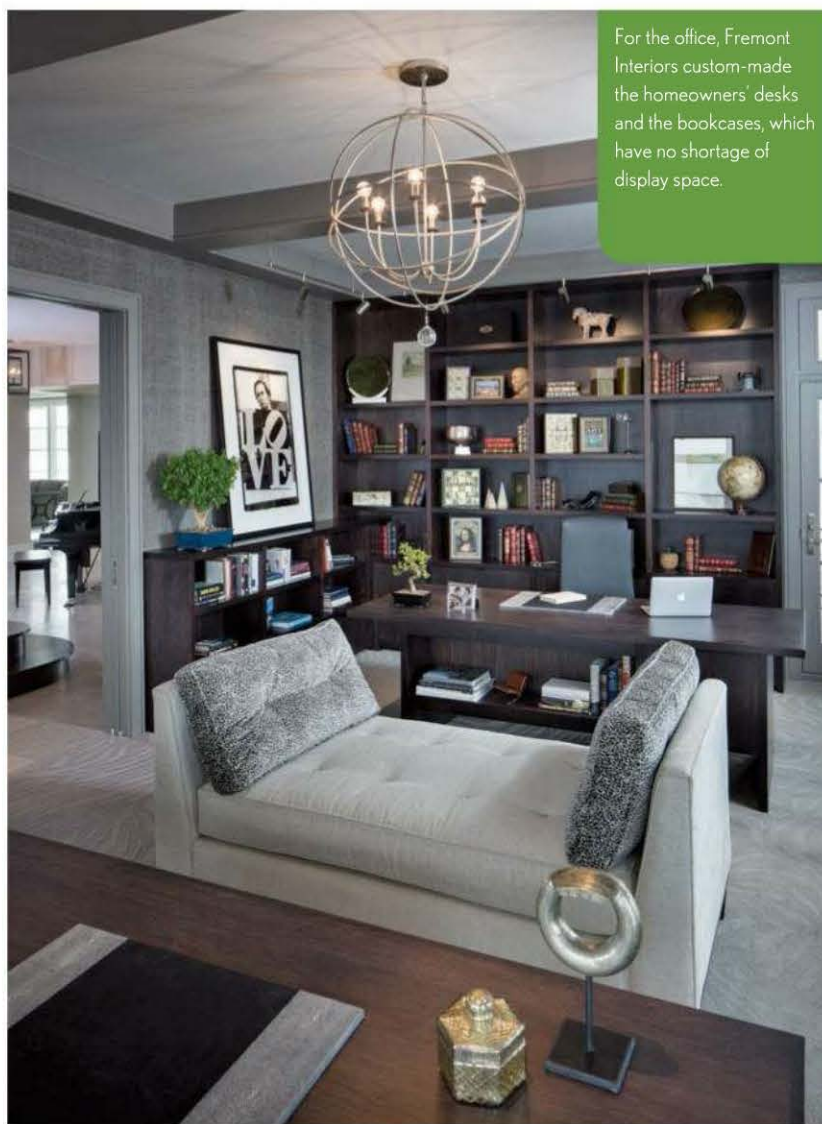
The dark-stained walnut dining table by Fremont Interiors features clean,

contemporary lines with two connecting trapezoid-shaped pedestal bases. Twelve gray leather chairs from Leathercraft provide seating.

“The homeowners wanted the table to be a work of art rather than have a lot of carvings and fluff,” Gilchrist says. “It’s a quiet design that doesn’t have a lot of visual noise.”

The three sets of French doors leading to the outside terrace are covered floor-to-ceiling with silk drapes, which can be left open or closed for a more intimate dining experience. This design also expands the homeowners’ options when entertaining.

“The thought was they could open the doors when the weather was great and have seating both inside and outside,” Mordoh says.





Specialty Stainless Steel Fabrication custom-made the kitchen's range hood. Its rivets mirror those found on the hanging Hudson Valley pendant lights, supplied by Ferguson.

Family time

Santarossa created a huge see-through fireplace and mantel, finished in the same honed-gray limestone as the dining-room floor, to separate the dining room from the great room. Here, there's a casual dining area with multiple seating arrangements, strategically placed to take advantage of the beautiful view.

"This will be the hub of the home," Campbell says.

A gray chenille, L-shaped sectional from Duralée, a gray ultrasuede cocktail ottoman from Vanguard, and a couple of occasional chairs in gray and cream leather make up the main sitting area. They're arranged on the variegated gray, borderless loom rug in 100-percent wool, custom made for the space by Royal Gallery of Rugs.

Behind that grouping is a gray-and-glass sofa table and two benches in a combination of cream leather and gray textured fabric by Vanguard. Yet another seating area features four chairs arranged in a circle around a polished-chrome drum table.

But the highlight in this space is a curved, 33-foot custom banquette by Hughey-Hartman Upholstery. The back is covered in gray leather and the seat is a metallic textured vinyl from Zinc Textile, a high-end German fabric company.

"It's a real juxtaposition of fabric—the smooth and the textured," Mordoh says. "We used textured vinyl for durability."

A kitchen, bar, and pantry for entertaining

The open-concept kitchen's proximity to the formal spaces in the home called for a more elaborate look.

"We tried to introduce elements into the kitchen that give it a bit of a wow factor and make it feel fresh," Okeley says. "We have a really interesting marriage of traditional to transitional elements mixed with some more contemporary, streamlined elements."

The subtle glaze on the putty walls pairs well with the glass-and-chrome accent cabinetry along the sink wall. White-veined graphite marble, with a honed finish for a matte look, was used for the countertops and on the islands. The 4½-

inch by 5¾-inch porcelain tiles—3-inch by 6-inch is typical—give the backsplash an interesting proportion while the ecru gloss crackle-glaze finish adds some sparkle.

The layout of the kitchen is symmetrical, but Okeley also included asymmetrical elements such as the cooking wall and an offset butcher-block area on the center island.

"Those make the entire area more interesting," Okeley says.

Functionally, the bar area works with the adjoining sous pantry. You won't



The main-level bar connects with the sous pantry via a sliding door above the sink.

want to miss the custom oversized pass-through sink, featuring a sliding door, which spans the bar and the pantry. They were fabricated and installed by Santarossa from honed Lennon granite. The door can be opened to place dirty glassware on the pantry side of the sink and then closed to hide the clutter.

The kitchen opens into the pantry, which will support catering when the homeowners host parties. It's a highly functional space, with a sink, a dishwasher, an undercounter refrigerator, and a coffee bar. The countertops are honed Lennon granite.

The pantry's slab-door, textured gray cabinetry, which has a more industrial,

urban feel, is also used in the gear and laundry rooms.

The focal point of the room is the polished herringbone mosaic in Calcutta marble used for the backsplash.

"This mosaic creates a classic clean line with an interesting shape, which is visible through the sliding panel and open to the main hall and great room," says Jacquie Winter, president of Architectural Brick & Tile.

Designed for duty

The laundry room houses the washer and dryer that handles sports-related laundry and a custom-built stainless-steel dog-wash area, which does double-duty for muddy boots. Santarossa manufactured the matching terrazzo floor and countertops from marble poured into epoxy resin.

On the hallway wall leading out to the pool is the colorful, whimsical "Oh Pool Boy" by top Cuban pop artist Nelson De La Nuez.

The pool bath, which overlooks the lake, is a work of art itself. Light-blue metallic wallpaper covers the walls, and a Fine Art Lamps fixture that resembles pebbles hangs from the ceiling. One-inch-square Twilight Moonstruck glass mosaic is used on the backsplash wall. The sink is offset so the views of the water are unobstructed. The teal-stained vanity allows the natural wood grain to come through.

"Everything flows," Okeley says. "The whole room feels like it's one with the water."

Okeley describes the craft room as "architecturally strong and edgy" with a "funky art-studio feel" to it. It features a cantilevered shelf on the window wall that breaks up the space so it doesn't look like a room of cabinets. Stainless-steel chairs around the built-in table maintain the industrial look. Three pendants by Hubbardton Forge lend an artistic treatment to the room's lighting.

Right off of the garage, the gear room has individualized storage for each family member to stash their things, plus a charging station and a layout table for opening mail—complete with a recycling bin. There's even a magnetic board for posting notes. 📌

BY SHARI HELD

SPACES TO CALL THEIR OWN

Upstairs, the eclectic family digs include a beautiful master suite that rivals accommodations in most elegant boutique hotels and a kids' media room with noteworthy accents.

PHOTOGRAPHY BY TONY VALAINIS

T

THE UPSTAIRS HOUSES BEDROOMS AND BATHS for family and guests, the main laundry, and a media room for the kids.

"The upper level is the family area," says interior designer Linda Mordoh. "Each bedroom reflects the personality of the person who's going to be living in it."

Several repeating themes from the main level carry through to the upstairs: the innovative use of stone and tile in the baths, terrace access from most rooms, and a dedication to marrying conve-

nience with beauty, even in the tiniest details.

A bit of the unexpected

The upstairs "rock 'n' roll" room is where the kids can congregate to watch TV, listen to music, or socialize with friends.

The expanse of window on one curved wall provides a fantastic view of the water, while the adjoining wall sports



a built-in media cabinet in a dark-gray wood-grain melamine with brown undertones. Wide planks, arranged in a chevron pattern, create a stylish framework for the flatscreen TV. A beverage center made of the same wood houses a small sink and refrigerator for convenient snacking. Kitchens by Design provided all cabinetry.

The furnishings supply a kick of color and playfully modern elements. The black-leather Mr. Big sectional by

Thayer Coggin pairs nicely with the custom, oversized cowhide ottoman by Hughey-Hartman Upholstery and a modern black-framed Thayer Coggin Claes chair with a back in the shape of the “@” symbol and an orange-leather seat. Each of the four chairs around the room’s dining table is a different hue—red, orange, green, and yellow.

You won’t want to miss the groovy artwork by Indy artist Walter Lobyn Hamilton. He’s captured the likeness of

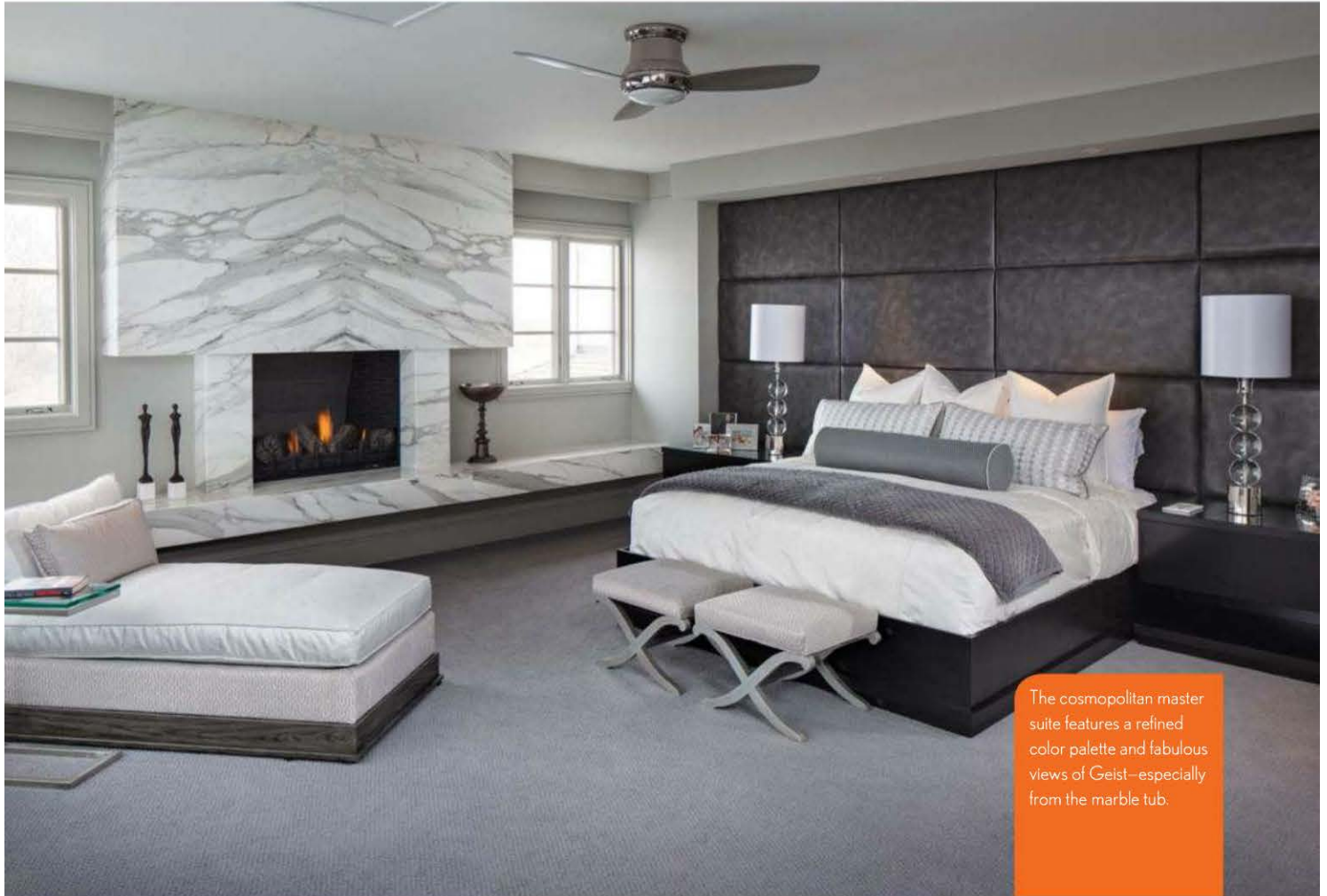
iconic musicians—Bruce Springsteen, Michael Jackson, Blondie, Elvis Presley, and Johnny Cash—in broken shards of vinyl LPs.

“This is the focal point on the wall in the rock ‘n’ roll room,” Mordoh says.

The adjoining lounge bath is a totally unexpected eye-popper. The custom-cut, multidimensional chevron floor was created from polished and honed black-and-white porcelain supplied by Architectural Brick & Tile and implemented



Playful accents permeate the kids' media room, such as brightly colored pillows and chairs, musician portraits fashioned out of pieces of vinyl records, and the glossy red vanity in the adjoining half-bathroom.



The cosmopolitan master suite features a refined color palette and fabulous views of Geist—especially from the marble tub.



36 IM | DREAM HOME 2015



by Santarossa Mosaic & Tile Co.

It's the perfect foil for the cabriolet-legged, freestanding vanity in a high-gloss red-lacquer finish. A silver-leaf ceiling treatment adds sheen, and the knee wall, which serves as a divider, is topped with stainless-steel rods featuring multiple-sized polished silver spheres. The walls are white—but with a twist. They're finished with whiteboard paint so people can write messages or capture a thought.

Lavish and luxurious

The piece de resistance of the upper level is the master suite. Restful shades of gray, silver, and white create a restrained backdrop for the bookmatched marble fireplace, surround, and overmantel, made from slabs of rare Calacatta Borghini marble in white with prominent gray veining. This stunning creation by Santarossa commands the owner's sanctuary.

"It's one of the hallmarks of the house," says builder Scott Campbell.

The overall look for the master suite was "boutique hotel," Mordoh says. Hughey-Hartman Upholstery created an elegant floor-to-ceiling headboard covered in variegated gray leather that fits perfectly into a recessed niche. The 48-inch, custom maple nightstands, finished in a dark stain that shows a hint of the wood's grain, were supplied by Kitchens by Design. Two benches by Wesley Hall at the foot of the bed complete the space.

In the seating area, a comfortable chaise lounge by Thom Filicia for Vanguard is positioned near the window to take in the beautiful vistas. A gray-velvet Wesley Hall sectional sits in an alcove near a door that opens to a rooftop terrace. The metallic-finished coffee bar, outfitted with a sink and undercounter refrigerator, was also supplied by Kitchens by Design. Solar shades and sheers in horizontal bands of white, silver-metallic, and gray, both of which are remote-controlled, cut the sun's glare and offer privacy.

The Calacatta Borghini marble also adorns the tub deck, countertops, shower, and floor of the luxurious, spa-like master bath.

"We used a traditional material that



Set against Colts-blue walls, the crisp built-in shelving pops in this boy's bedroom.

was first quarried thousands of years ago in Italy and gave it a more contemporary feel with the layout of the veins and the simple, square cut of the edges," says Rob Santarossa.

A delicate chandelier by Edge Lighting, supplied by Ferguson Bath, Kitchen & Lighting Gallery, provides sparkle, but its LED bulbs won't add extra heat to the space. The distinctive feature wall in the dry-off area is made of Captivate Calcutta and Blue Logos mosaic tiles.

"This poses as a piece of wall art, which, when one enters the bath, is an artistic highlight to the eye," says Jacquie Winter, president of Architectural Brick & Tile, which supplied the materials.

From the sumptuous marble-encased drop-in tub, one can see across Geist Reservoir while soaking away the stresses of the day. The homeowners wanted their vanities in front of the windows, so Kristin Okeley of Kitchens by Design created a mirrored grid pattern for the creamy gray cabinetry that matches the grid of the window mullions and creates the illusion of more space.

"The Calacatta Borghini marble is the focal point, so the cabinetry needed to be a little more muted," Okeley says.

Kitchens by Design also built the cabinetry for the his-and-her closets. Her space, finished in the same creamy gray as the bath, features hanging bars that can be pulled down and shelving behind glass doors. His closet cabinetry is

melamine with a dark-walnut finish and also includes ample storage, as well as a countertop for packing a suitcase.

Bunking up in style

The entire home has lots of built-in features, but such characteristics are showcased to perfection in the bunkroom. It's planked floor-to-ceiling in the same white-painted wood used for the four bunks and the ladder. Each bunk is equipped with niches that house lighting, USB ports, and charging stations for phones.

"It was a natural for a nautical theme," says Mordoh, who used navy-blue carpet and navy-and-white horizontal-striped duvets in the space. Even the artwork has a nautical tie. It's a mixed-media piece by Cuban artist Rey Alfonso that incorporates an oar from a boat once used by refugees leaving Cuba.

The adjoining bath, which is also accessible from the guest suite, boasts a striking gray-and-white striped marble shower and countertops. The vanity has a stainless-steel base, and the simple slab-front cabinetry is painted gray to coordinate with the tile.



The bunkroom's nautical theme extends to the room's artwork and accessories.

"We really tried to keep everything in here clean and let the power of the stone be the focal point," says Elaine Pitcock, a designer at Kitchens by Design.

The shower is simply striking and could hold its own regardless. Polished 12-inch by 24-inch stone tiles are laid in an irregular, linear pattern on the shower walls, while 3-inch-square mosaic tiles, custom-cut from the same stone, are laid in a quarter-turn design on the shower floor for more intricate detailing. Eight-inch by 48-inch porcelain wood planks with a wire-brushed finish were used on the bathroom floor to give the space more texture.



A bubble-like tile ensures this upstairs shower, while neutral in color, is anything but boring.

A practical and pretty blend

The homeowners wanted a softer look for the upstairs laundry, which houses two sets of Samsung washers and dryers and plenty of hanging areas and storage space. Kitchens by Design used coconut-colored, wood-grain melamine for the streamlined cabinetry and a white farm sink by Kohler.

The backsplash areas are hand-cut, 6-inch by 12-inch white porcelain tile with a dark crackle finish, arranged in a staggered pattern. To create interest in the narrow room, 12-inch by 24-inch Limestone Anthracite porcelain tiles in a linear soldier pattern were used on the floor. ☺

Indianapolis MONTHLY



INDULGE
in local food,
shopping, nightlife,
events and more.

DOWNLOAD
Tablet Subscriptions

FOLLOW
[@IndyMonthly](https://twitter.com/IndyMonthly)

SUBSCRIBE
IndianapolisMonthly.com/Subscribe

The upscale bar offers everything the homeowners need for the utmost in entertaining.

BY LORI D. ROBERTS

ALL FUN & GAMES

An ideal mix of entertainment and relaxation awaits in the lower level.

PHOTOGRAPHY BY TONY VALANIS

T

THAT BOUTIQUE-HOTEL-MEETS-LAKE-HOUSE feel extends to the Dream Home's lower level, where luxury materials, entertaining spaces, and soothing spa options mingle with the casual feel of a waterside retreat.

Designers and builders worked with the homeowners to create a space that

taupes in starring roles. Stained concrete floors offer durability and low maintenance without sacrificing style.

"This is all about family entertaining," Mordoh says. "A lot of thought was put into how they would use the room."

Art that adds punch

The home's lower-level artwork reflects a contemporary, edgy tone. The wall closest to the shuffleboard table showcases two black-and-white paper works by local artist Susan Brewer, while the landing is home to abstract mixed-media pieces by Chuck Marksberry and Seth Marksberry. On the opposite end are three more mixed-media pieces by Chuck Marksberry. And in the spa, a Jim

keeping drinks at an ideal temperature.

The bar includes two glass-door refrigerators, a stainless-steel microwave, and a dishwasher. Maple cabinetry in a custom black stain give the bar a swanky feel. Behind it, a flatscreen television is ready to broadcast a game. Ferguson Kitchen, Bath & Lighting Gallery provided the teardrop fixture by ET2 Contemporary Lighting, which gives the area flash.

"It feels very moody," says Elaine Pitcock, a designer with Kitchens by Design.

But moody doesn't mean somber. Rather, the dark, earthy hues and natural textures are intended to relax the senses.

"We're trying to create this cozy and soothing environment," says the homeowner.

Tactile senses will be pleased with the texture along the bar's multi-leveled countertop, which is covered in dark suede granite. Flecks of mica give it a different sparkle depending on the vantage point. Santarossa Mosaic & Tile Co. provided the stone, including a molded backsplash that wraps the inside of the bar between the upper and lower countertops. The backsplash is an artistic feat, designed to create a perfect, seamless surface.

"When you work with a piece of slab material, normally it's hard to go without segmenting the pieces," says Rob Santarossa. "Instead of segmenting the granite, we grind it, polish it, and mold it to fit."

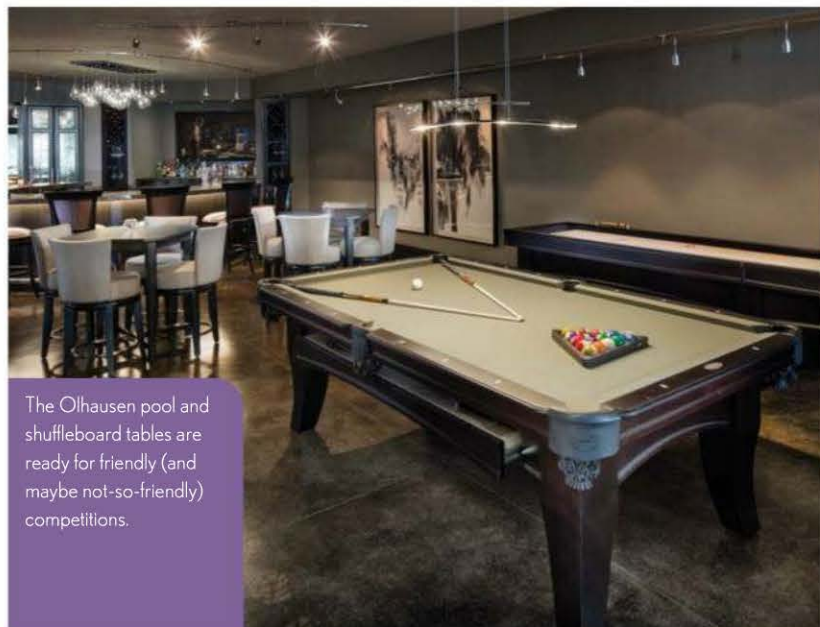
Leathercraft stools with purple-leather seats and backs and nailhead detailing await bar guests. Mordoh complemented the area with two pub tables and sophisticated silver-metallic upholstered chairs.

Instead of closing it off, the homeowners opted for a wine room with a view. They wanted the space's shapes, colors, and materials to add an artistic element to the lower level. Windows offer a peek into the room, which is covered in beveled-edge, hand-silvered antique-mirror tile by Architectural Brick & Tile.

"It gives it kind of that old look, but it's unique," says Jacquie Winter, the company's president. "It's all hand-done."

Game on

The lower level's central area, a spot nestled between the bar and the gym, is reserved for games and gathering. The dominant centerpiece is a double-sided



The Olhausen pool and shuffleboard tables are ready for friendly (and maybe not-so-friendly) competitions.

would feel like home to their family and their guests of all ages. An extravagant bar, a media room, a game area, a workout room, and a spa all pitch in to meet the challenge.

"Being on the lake, we can take advantage of everything it has to offer," the homeowner says. "But we also wanted the feel of a lower level."

Interior designer Linda Mordoh worked with Gary Nance to fashion an open expanse with areas divided by mood and character rather than walls and doors. The space has an earthy and natural color scheme, with dark-stained woods, silver accents, and purples and

Martin bronze wall sculpture adds another layer to the soothing surroundings. All pieces are from Evan Lurie Gallery.

A natural gathering space

The lower-level bar makes a statement with its unique horseshoe shape. Kitchens by Design outfitted the bar with everything the consummate host would need for large parties with friends or quiet time with family. Along the back wall, cabinets with leaded-glass doors provide storage for wine bottles and glasses. A large sink is paired with a stainless-steel lidded trough, perfect for holding ice or

concrete fireplace by Elements Concrete Studio. An “urban timber” texture gives the look of wood planking, says Chad Bruick. Its design includes a concrete bench in front, offering more seating and a cozy spot for enjoying the fire on a cold winter night.

If people are in the mood to play, they can enjoy a few of America’s favorite games at the Olhausen Chicago pool and shuffleboard tables from Jay Orner & Sons Billiard Co. Co-owner Tom Orner says pool tables have always been popular items, but shuffleboard tables have taken off in recent years. They include several game options (this table also has a bowling game that uses shuffleboard pucks); are popular among men, women, and children; and can serve as furniture, creating walls and walkways where there are none.

Overture, curtain, lights

The theater room might be a misnomer. The home’s media area follows the trend of keeping the big screen out in the open without the customary walls and doors. Dark paints and accessories help

keep brightness at bay, says builder Scott Campbell, but it’s not completely closed off from the rest of the lower level.

A counter-height ledge topped in Caesarstone has six bar stools for viewers who want a place to put their popcorn and drinks. The rest of the audience can get comfortable on a huge, deep-taupe Burton James sectional sofa, with seating for 10 or more.

“This just draws you in to watch a movie,” Mordoh says.

The media room has been outfitted with some of the most cutting-edge technology on the market. Start with the screen. Instead of a traditional white model that can look washed out or faded in some lighting, the 144-inch diagonal style is a Screen Innovations Black Diamond projection screen. It will hold its picture in any light, says Mark Vyain, president of Digitech Custom Audio & Video.

“The Black Diamond screen rejects the ambient light from the room,” Vyain says. “It just does a better job of maintaining brightness and contrast on the screen.”

Concrete floors and hard wall surfaces might have posed a challenge for creating optimal audio, but again, technology came

to the rescue. Vyain and his staff turned to the award-winning Anthem Room Correction System, which does a great job of achieving the best sound in a room, regardless of surfaces and absorption materials, Vyain says.

The Sony video projector is considered a 4K projector, which delivers a resolution that is four times greater than what viewers might see on their 1080p screens at home. The homeowners can tap into a Sony 4K media server, which streams movies and other materials in 4K resolution. If family members would rather watch something elsewhere in the home, they won’t miss out on the picture quality, Vyain points out. Every TV in the home is 4K, offering a picture that’s unmatched for home viewing.

“It’s like what you see in most commercial movie theaters,” Vyain says.

Video, audio, lighting, and more can be managed through the Savant system—the “intelligence” of the home—via a remote or the system’s industry-leading app on an Apple device. The app allows for total control throughout what is truly a smart home or, as Vyain puts it, better than smart. The owners can create



Shhh! When it's movie time, the home's cozy media room is the place to be. The large sectional ensures the whole family can join in.

“scenes” (for example, choosing the ideal temperature and what music they want to play), save those settings, and pull them up at a later time.

“The client can interact above and beyond what our programmers have done for them,” Vyain says. “It’s completely user-definable.”

Working out (side)

Ask the homeowner to name her favorite place on the lower level, and she’ll point to the workout room. This space was designed to take advantage of the view and open up easily to the outside. Folding glass doors line the exterior wall, sliding back into themselves for those days when the owners want to work out in fresh air. A retractable patio screen keeps out mosquitoes and other pests.

Nearby, a spa bathroom’s walls are lined in 12-inch by 24-inch Marmo Acero

Perlato Scuro porcelain tiles. The free-standing vanity by Kitchens by Design is topped with a huge stone sink and countertop by Santarossa. The sink and steam shower were crafted of Gibraltar limestone. The stone’s horizontal linear veins give the whole area an extravagant feel.

“The contemporary clean look is very popular now, and I think the limestone lends to that feel,” Santarossa says.

Regardless of the hour, the Dream Home’s lower level is the place to go.

“We wanted it to be a place for the family to have an extension of everything that’s going on in the house,” says the homeowner. “The whole space is very open. You could be off playing pool, you could have a game on, you could have all that activity, and yet still feel very integrated.” ☺

VENDOR LIST

2015 *Indianapolis Monthly* Dream Home

AMERICAN HERITAGE SHUTTERS
598-6908, ahshutters.com

ARCHITECTURAL BRICK & TILE
842-2888, archbricktile.com

BGI FITNESS
842-4140, bgifitness.com

CARTER LUMBER
773-8600, carterlumber.com

CUSTOM CONCRETE
896-2885, customconcrete.com

CUSTOM DRAPERY SERVICE
587-1518, mykbhome.com

DIGITECH CUSTOM AUDIO & VIDEO
580-1922, digitechcustom.net

ELEMENTS CONCRETE STUDIO
292-9776, elementsconcretestudio.com

THE EMPTY VASE
925-8273

EVAN LURIE GALLERY
844-8400, evanlurigallery.com

EXTERIOR WOOD RESTORATION
758-5942, extwoodrest.com

**FERGUSON BATH, KITCHEN
& LIGHTING GALLERY**
705-0794, ferguson.com

GARY NANCE DESIGN
558-8759, garynancedesign.com

HOME DETAILS OF SAVVY DECOR
848-0020, homedetailsofsavvydecor.com

HUGHEY-HARTMAN UPHOLSTERY
844-4800, upholsteryguy.com

INDY CUSTOM POOLS
888-481-7665, indycustompools.com

JAY ORNER & SONS BILLIARD CO.
243-0046, ornerbilliards.com

KITCHENS BY DESIGN
815-8880, mykbhome.com

KROGER
800-576-4377, kroger.com

MARINA LIMITED PARTNERSHIP
845-0270, marinalimitedland.com

N3 BOATWORKS
845-9253, n3boatworks.com

NELSON ALARM
255-2125, nelsonalarm.com

OUTDOOR ENVIRONMENTS GROUP
292-9776, oeggroup.com

PIANO SOLUTIONS
582-1946, pianosolutions.net

PLUMBERS SUPPLY CO.
842-8787, plumbers-supply-co.com

PRECISION COMFORT SYSTEMS
867-2665, precisioncomfort.com

ROYAL GALLERY OF RUGS
848-7847, rgrindy.com

SANTAROSSA MOSAIC & TILE CO.
632-9494, santarossa.com

SAVVY DECOR
848-0020, savvydecor.com

SCOTT CAMPBELL CUSTOM HOMES
765-778-2738, scottcampbellcustomhomes.com

TOM WOOD LEXUS
580-6888, tomwoodlexus.com